

Don't blow up your computer!



Dear Diane,

I am not able to open an excel document. I used to be able to open it before but now it won't open. It just hangs up. What should I do?

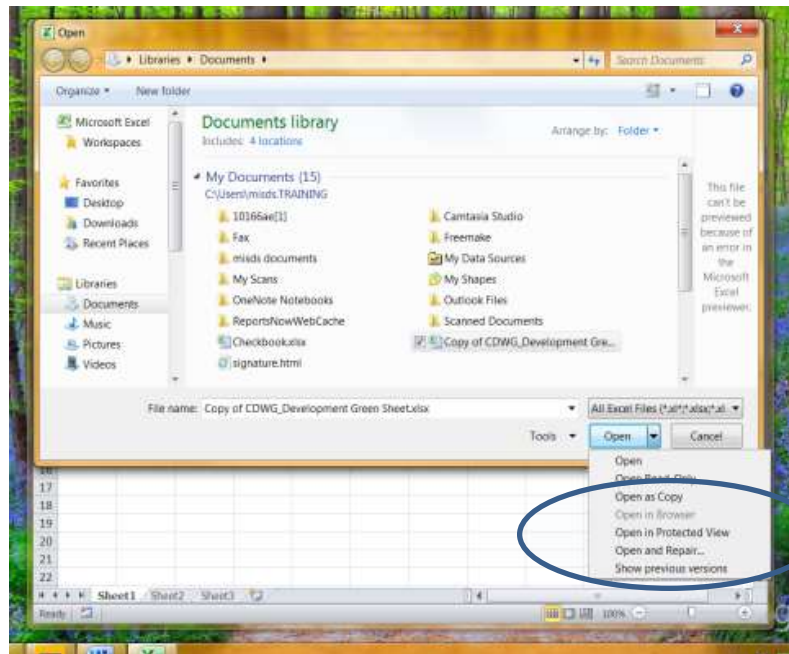
Waiting Forever

Dear Waiting,

There may be a number of reasons why you can't open the document. It may have become corrupt or have other issues.

There are a few things you can try. The first thing is to try to open it in "safe" mode. You do that by holding down the Ctrl key and then double-click to open the document.

If that doesn't work open a blank excel document and select open. Then you can select the spread sheet you want and where it says open click on the triangle and select **Open and Repair...**



It may be your user profile. If that is the case then you will have to call the help desk and see if they can recreate your profile. Good luck...DSG